

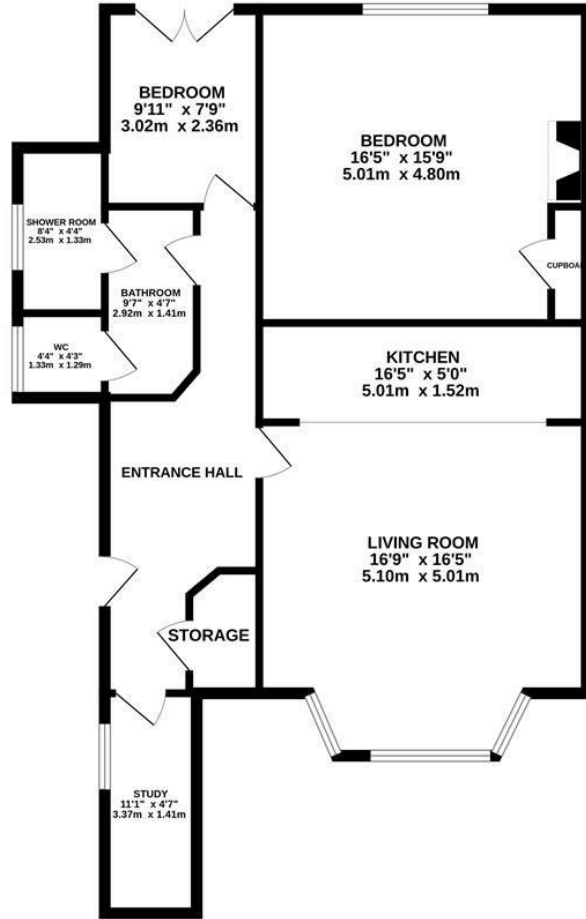
The Mount, St. Leonards-On-Sea TN38 0HR

Offers in excess of £350,000



A simply stunning TWO BEDROOM apartment located within one of the few surviving GRADE II LISTED STUCCO BUILDINGS designed and built by Decimus Burton in 1833, set within a CONSERVATION AREA elevated above the hub of St. Leonards On Sea. Enviably placed just a short stroll from the beach, shops and eateries, the property's crescent arcs around a private Tennis Court gifted to residents as part of the Mount Resident's Association CIC. Spanning the LOWER FLOOR the accommodation here is accessed via a PRIVATE ENTRANCE and enjoys a wealth of original features such as Georgian sash windows, feature fireplaces and an original stone cool store. The spacious OPEN PLAN LIVING SPACE is positioned at the front of the property and benefits from a BAY WINDOW and an original stone fireplace, whilst the kitchen is fitted with CONTEMPORARY UNITS offering ample storage and worktop space. There are two bedrooms at the rear of the property, with the primary bedroom measuring an impressive 16'5 x 15'9, benefitting from an original fireplace and BUILT-IN STORAGE. The second enjoys access out to the courtyard garden and

GROUND FLOOR
959 sq.ft. (89.1 sq.m.) approx.



TOTAL FLOOR AREA : 959 sq.ft. (89.1 sq.m.) approx.

Whilst every attempt has been made to ensure the accuracy of the floorplan contained here, measurements of doors, windows, rooms and any other items are approximate and no responsibility is taken for any error, omission or mis-statement. This plan is for illustrative purposes only and should be used as such by any prospective purchaser. The services, systems and appliances shown have not been tested and no guarantee as to their operability or efficiency can be given.
Made with Metropix ©2025

